



KINGSBRIDGE

community college
sixth form

prospectus

“All of my courses have been thoroughly enjoyable and I have learned more than I ever imagined I would.”



Welcome

The Sixth Form at Kingsbridge Community College is a special place with a distinctive atmosphere. Yes, we have high expectations of everybody in the team, staff and students, but the support to aspire to great things is always there. We believe strongly that everybody is of equal importance and we value and respect each other's opinions. There are always new challenges to take on and we expect all members of the Sixth Form to find ways of broadening their horizons, through academic and vocational excellence, travel, leadership, community service and work experience. Our reputation is special in the community. We always say that the Sixth Form at Kingsbridge is for life and we are often visited by past students : our doors are always open.

Our Sixth Formers are very successful and carry our aims and values into the world. Continuity and support are rare and valuable in this complex society and we like to think that we make a difference to the lives of everybody who passes through our doors.

Tina Graham
Head of Sixth Form
Assistant Principal



Student Perspective

Kingsbridge Community College Sixth Form is worth working for. From superb teaching to student support schemes, this excellently equipped building has everything you could possibly need for making an informed decision regarding the next step. The dynamic nature and palpable energy of the students and teachers comes together to make the perfect working environment and helps students of all backgrounds achieve outstanding academic results, a fact reflected by our latest OFSTED report. The unrivalled assistance and guidance given to students throughout the course of their time in Sixth Form leaves you perfectly prepared for whatever the future holds.

Student Leadership is an aspect of this sector of the College that is particularly important to teachers and students alike. The Sixth Form Team's open and active attitude is so effective that students feel empowered to make a difference in the Sixth Form community themselves. There's a Social Council active within the Sixth Form that organises various fundraisers for charities and to raise money for our Prom. This student organised body ensures that we're never short of activities to bring us all together and aim to raise money for many good causes.

When choosing where to complete your further education this Sixth Form can rarely be beat, helping to prepare students for their future, whether it's university or the workplace. Providing not simply the facilities, but the advice and support also. The staff and students maintain a familial, friendly atmosphere whilst still retaining personal attention and allowing each student to take their own journey.

Harry Bignell and Jasmine Freeman



“I’m glad I chose Kingsbridge, the facilities are excellent and there is a good atmosphere around the College.”

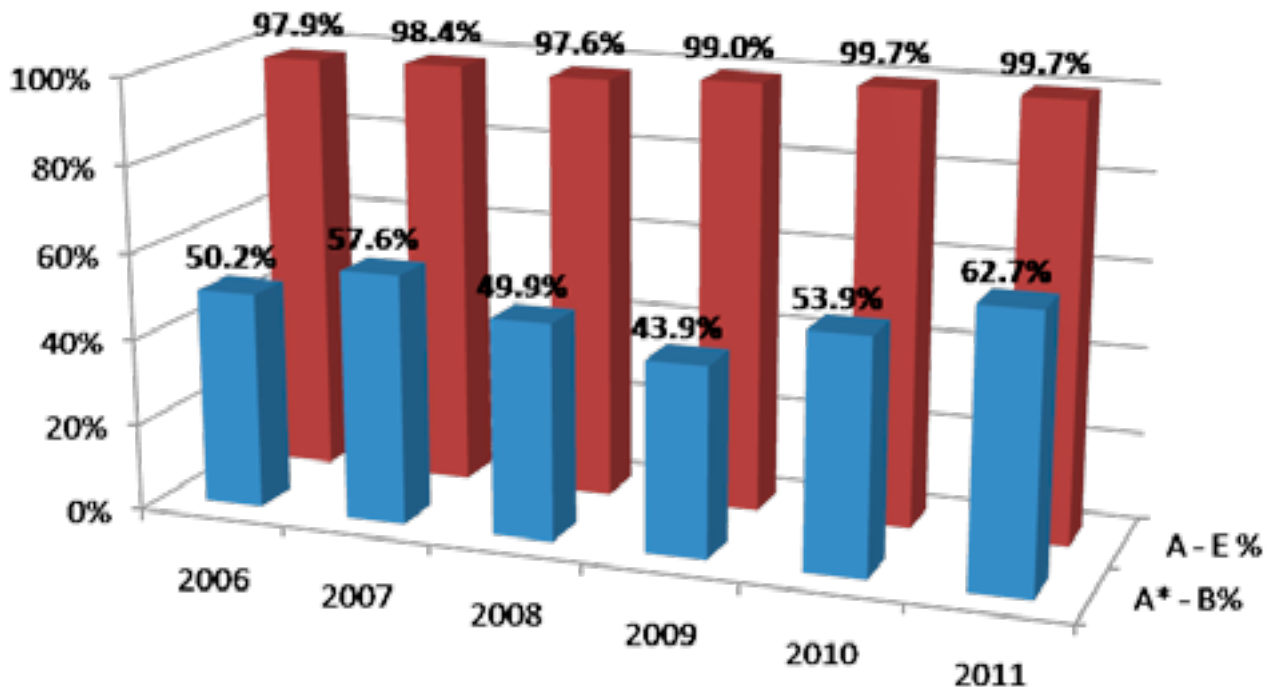


Student Performance

In 2011 A2 Students achieved
99.7% A - E and **62.87% A - B**

These results show a marked improvement in the percentage of students gaining the highest grades at A2. Outstanding results such as these are a testament to the hard work put in by teachers and students working collaboratively.

A2 Results 2006 - 2011



“There is a community feel, everyone looks out for each other and the teachers genuinely care.”



“An exceptional and outstanding College”

Ofsted - February 2008

The College lives up to its aims and objectives which is reflected by the latest Ofsted Report.

“Teaching is stimulating and interesting for students, who understand from thorough feedback how well they are doing and what they have to do in order to improve. Teachers have very good subject knowledge and plan very effectively.”

“Achievement and standards in the Sixth Form are also outstanding. The quality of teaching is very high, with lessons stimulating and interesting, providing good pace and active involvement. The curriculum is wide enough to meet the needs of students of all abilities and interests. The Sixth Form Centre, opened in September 2007, has provided an exceptional working and social environment. Students were involved in its design and take a pride in looking after the facilities.”

“The care, guidance and support that students receive is outstanding. Guidance towards Higher Education or employment is comprehensive and very personal. Students describe the commitment of staff to their success as exceptional, with work marked quickly and thoroughly and teachers always willing to give up free time to help them.”



Guidance and Care

You are encouraged to enrol on courses which suit you. You can tailor your study programme to your individual needs. Advice is given both before and after GCSE exams in Year 11 to guide you to select the right programme. All students are supported by a Tutor who is available to offer advice and encouragement. Tutors know their students well and help them through their course towards their future.

Progress and development are carefully monitored by teaching staff and Tutor through SuccessTracker (our reporting system) and a Personal Tutoring Programme. High standards are set for all. Regular attendance and sustained effort is expected and this is monitored by our Learning Coordinator.

Individual careers advice, given by experts, is available for all students and references are based on detailed knowledge and understanding of the individual student. This leads to a high level of success in Higher and Further Education applications.

Leavers' Destinations:

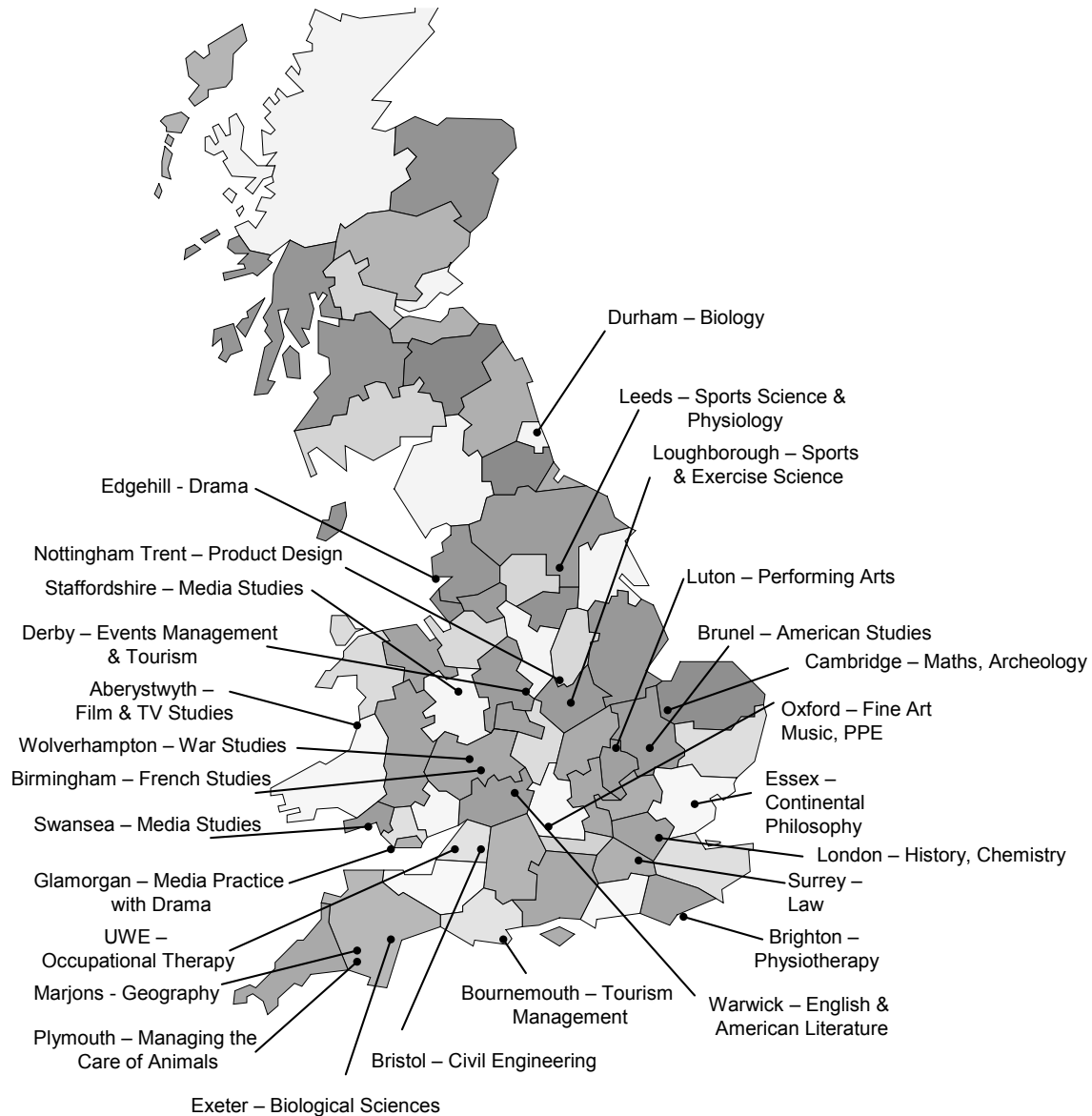



**Higher Education
or Further Education 80%**



Beyond Kingsbridge

Kingsbridge Community College Sixth Formers go on to a wide range of courses in Further and Higher Education and jobs of all kinds. Past students are now studying all over the world including the USA and Australia.





“I cannot fault my time here. The staff are friendly, the College is well-run, organised and informal. Thank you”

Global Opportunities

A great number of students move on to Higher Education after completing a Gap Year. Examples include:

- Year In Industry then a Degree in Business Information Technology at Brunel University.
- Australia working for a conservation project followed by a Degree in Biomedical Technology at Bradford University.
- Adumasa, Ghana, teaching English followed by a Degree in English at Cardiff University.
- South Pacific travelling and climbing followed by a Degree in Geology at Cardiff University.
- Working in the Film Industry followed by a Degree in Media Studies at Staffordshire University.
- Madagascar then a Degree in Biological Sciences with Italian at Swansea.
- Teaching in South Africa and travelling for six months.
- Working and surfing in Morocco followed by a Degree in Multimedia Studies at Swansea.





Enrichment

Sixth Form life also presents many opportunities to extend, enrich and enjoy a range of activities outside of the classroom. In an ever competitive world Enrichment is becoming increasingly important, and is therefore a compulsory aspect of the Year 12 programme of study. A large number of students get involved in a wide range of activities including fitness, golf, canoeing and climbing. Included is the opportunity to gain a Duke of Edinburgh Award and take part in the annual Ten Tors or Tour de Trigs Competitions. Also offered on the varied programme are a number of sporting activities and the chance to represent the College in a team. Many soirees and parties are organised by the Social Committee to raise money. Charities, including Adumasa and St Luke's Hospice are supported through a variety of activities such as sponsored swims, walks and dress-up days. Exhibitions, concerts and productions all allow students to develop and demonstrate their talents. Peer Mentoring, a Debating Society and various Committees challenge our students and give them opportunities to show leadership and to make a real difference in our community and even further afield. Many more activities are available through the Enrichment Programme. From Life Drawing to undertaking a Team Leadership course certified by the CMI (The Chartered Management Institute), there is something for everyone and we are always ready for new ideas.

Kingsbridge Community College Sixth Form encourages work experience, and the Careers Department will do all it can to support this. Work experience is an ideal way to balance academic study with life-long learning in a practical environment and is often a prerequisite for many employers and University courses.





“Choosing to do my courses at this college was one of the best decisions I’ve made.”

Courses

Students enter the Sixth Form from a wide range of starting points. Some have achieved highly at GCSE and are aiming for top Universities; others want to study A Levels before entering employment; some want to develop their education along a vocational route, which may involve A Levels, BTECs, Diplomas or NVQs.

We have a variety of courses to suit all needs. Programmes are personalised.

Mainly A Level courses

The A Level examination is broken into 2 stages - AS and A2.

AS (Advanced Subsidiary) Level is the first half of an A Level, examined in Year 12.

The second part of the A Level course is called A2.

This is the traditional Sixth Form route. Entry requirements are at least 5 GCSEs at grades A* - C including English and Maths. Students are expected to select a minimum of 4 AS subjects in Year 12 and continue to follow a minimum of 3 subjects to A2 in Year 13. Most of the subjects are likely to be assessed through examination.

AS courses include:

Art and Design, Art Textiles, Applied Business, Biology, Chemistry, Critical Thinking, Dance, Drama and Theatre Studies, English Language, English Literature, Film Studies, French, Further Maths, General Studies, Geography, Health and Social Care, History, Law, Maths, Media Studies, Music, Philosophy & Ethics, Physical Education, Physics, Photography, Product Design, Psychology, Sociology and Spanish.

There is a wide range of A Level courses available which have been developed to meet the needs of as many students as possible. As well as choosing the subjects that you enjoy, you should look for balance and breadth. If you are planning to go to University and know which subject you want to study you should research required A Level courses before making your choices. This is especially important for vocational courses such as Medicine or Veterinary Science. Students who intend to make an application for Medicine, Oxbridge or Law are advised to take either Critical Thinking or General Studies as a fifth AS subject.



Courses

Mainly BTEC and Diploma Courses

Entry requires at least 5 x GCSEs or equivalent at grades A*-C.

Entry requirements are at least 5 GCSEs at grades A* - C. Students are expected to select a minimum of 4 subjects in Year 12 and continue to follow a minimum of 3 subjects in Year 13. Most of the subjects are likely to be assessed through examination.

BTEC/Diploma qualifications are assessed through continuous assessment and portfolio submissions. Level 2 and 3 courses are available.

If you hope to study at University you should know that all Universities now require GCSE Mathematics and English at C grade or above.

Courses available are:

Level 3

BTEC ICT

BTEC Graphic Design

BTEC Music Performance

BTEC Science

BTEC Sport

BTEC Tourism

Media Diploma (double option)

Level 2

Construction

It is possible to take a combination of A Level courses and BTEC/Diploma courses within the Sixth Form.



Courses

The NVQ Option Level 2 & 3 - Workplace Based

There are no specific entry requirements for NVQs. In order to be registered for any NVQ programme, students must demonstrate the ability to sustain a workplace for a minimum of 4 consecutive weeks, alongside a level of performance and commitment acceptable to the employer and the awarding body.

NVQ is a Nationally Recognised Qualification based on evidencing practical skills and competency in the workplace (minimum of 15 hours per week). The majority of the student's week is spent in the workplace learning the skills and tasks appropriate to that industry. The student has to complete a portfolio of skills evidence which is monitored by an NVQ Assessor, and there are no formal exams.

The timetable is structured to suit the workplace requirements and the individual needs of the student. There are opportunities to be involved in the Sixth Form College extra curriculum and social activities. There are short courses offered to compliment the NVQ, as well GCSE retakes, literacy/numeracy, Information Technology and in some cases an additional A/S level may be taken.

NVQ Vocational Areas:

Early Years Education Level 2 & 3
Customer Service
Business Administration
Retail and Warehousing

Health & Social Care
Information Technology
Sport and Recreation

There are other NVQs available and students are invited to let us know there other areas of interest. Students interested must contact Mrs Burnett for more information -
Tel: 07968 710622 e-mail: burnett.s@kingsbridgecollege.org.uk



“All my subject teachers have been great, the personal support from them has been amazing and we are lucky we have such a great leadership team.”



Making your Choices

You are advised to look carefully at the range of courses available. The purpose of Year 12 is to gain as broad and balanced a programme as possible before moving on. For example, by taking English and two modern languages at AS Level you might also want to take an AS in Science or Mathematics, whilst somebody wishing to progress to read Medicine at University should be looking to gain an AS in the Humanities, Arts or Languages.



Considering Higher Education

If you are aiming to move on to Higher Education you should consider the following:

- 1) It is advised to take Mathematics if Physics is one of your choices.
- 2) If you are considering further study or a career in a Biological field, you would be advised to take Chemistry with Biology.
- 3) Mathematics can be taken without Physics and Chemistry without Biology.
- 4) A combination of non-Scientific subjects with Mathematics and/or Scientific ones is very acceptable for many careers. For example, Physics, Mathematics and a language is a desirable set of options.
- 5) In the Social Sciences/Humanities subjects, almost any combination of subjects is possible, although it is worth considering the nature of the study to be undertaken. For example, Philosophy & Ethics, English, Sociology, and History all require a considerable amount of reading and essay writing.
- 6) BTEC and Diploma qualifications are welcomed by many Universities for many courses. The University Council Admission Service (UCAS) publish points tariff tables they show for example, we can see as an example, that a BTEC Sport (level 3) qualification at distinction grade is worth 120 points. This is an equivalent to an A-grade at A Level. Universities may require students applying with BTEC qualifications to have relevant A Levels too, it really depends on the University and the course. Some research prior to making your choice is advised.
- 7) If you have a clear idea about your vocational route and who would prefer a work based programme you should consider the NVQ option.



Sixth Form Life

A Sixth Form course can be an invaluable bridge between College and Higher or Further Education and/or fulfilling employment. Kingsbridge Community College has the advantage of friendly students and staff who understand your skills and potential and want to see you succeed and aspire to great things – whatever they may be. To this it adds the novelty and challenge of studying new courses in a mature student environment.



“Kingsbridge Sixth Form has given me so many opportunities to develop my knowledge in my subjects as well as to develop myself as a person”



“I received all the help I needed from staff to enable me to study the courses that I am most interested in”





Kingsbridge Community College
Balkwill Road
Kingsbridge
Devon TQ7 1PL
t 01548 852641
f 01548 854277

e admin@kingsbridgecollege.org.uk
www.kingsbridgecollege.org.uk
www.kingsbridgesixthform.co.uk

Kingsbridge Community College Sixth Form

aims to be an outstanding learning
community where individuals thrive

as learners we are

aspirational
creative
resilient
reflective

as a community we are

responsible
dynamic
inclusive
global
confident